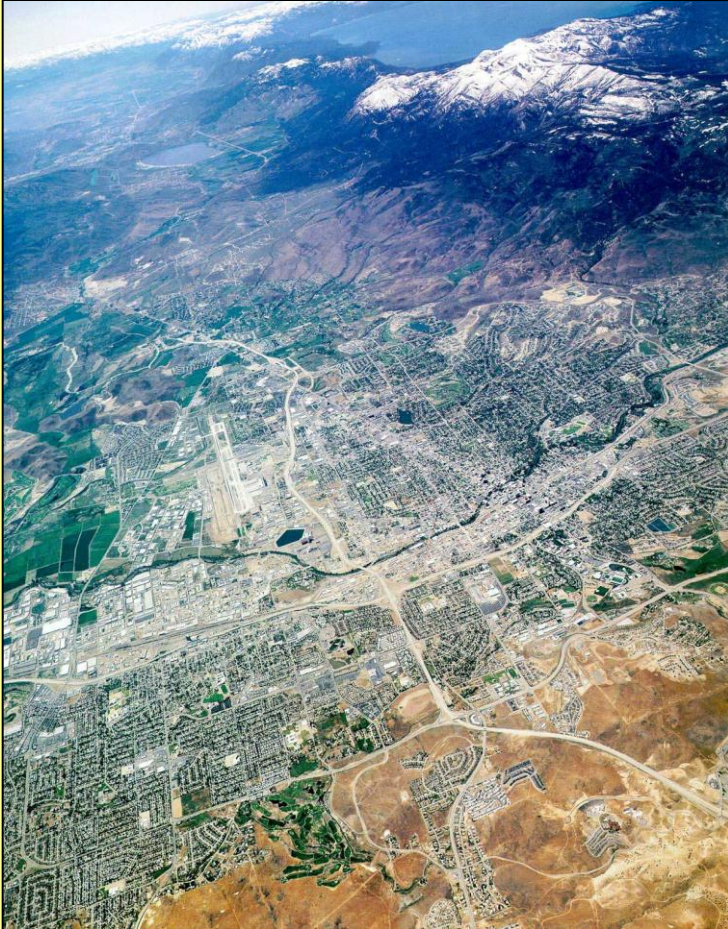




**Mark Foree, General Manager**

**Nevada Water Resources Association  
February 3, 2011**

# Truckee Meadows Water Authority (TMWA)



**The Cities of Reno and Sparks, together with Washoe County, formed TMWA, a joint power authority. Seven member directors appointed by:**

- Reno City Council (3 seats)
- Sparks City Council (2 seats)
- Washoe County (2 seats)

# Utility Assets

## Surface Rights –

over 90,000 AF

## Groundwater Rights –

33 wells with up to 22,000 AF



## Storage Rights –

- Owned – Donner and Independence (22,250 AF)
- Storage Contract – Boca & Stampede (up to 14,000 AF)

# Utility Assets



## Treatment Facilities

- Chalk Bluff - 83 MGD
- Glendale - 25 MGD
- Canal System

## Distribution System

- 1,600 miles of water mains
- 94,000+ services
- 94 pump stations
- 32 tanks (100 MG)
- 33 wells (66 MGD)



# Utility Assets



## Hydroelectric Generation

- 3 plants @ 2.5 MW each

## Financial

- ~\$77MM annual revenues
- ~\$662MM net assets
- ~\$545MM indebtedness



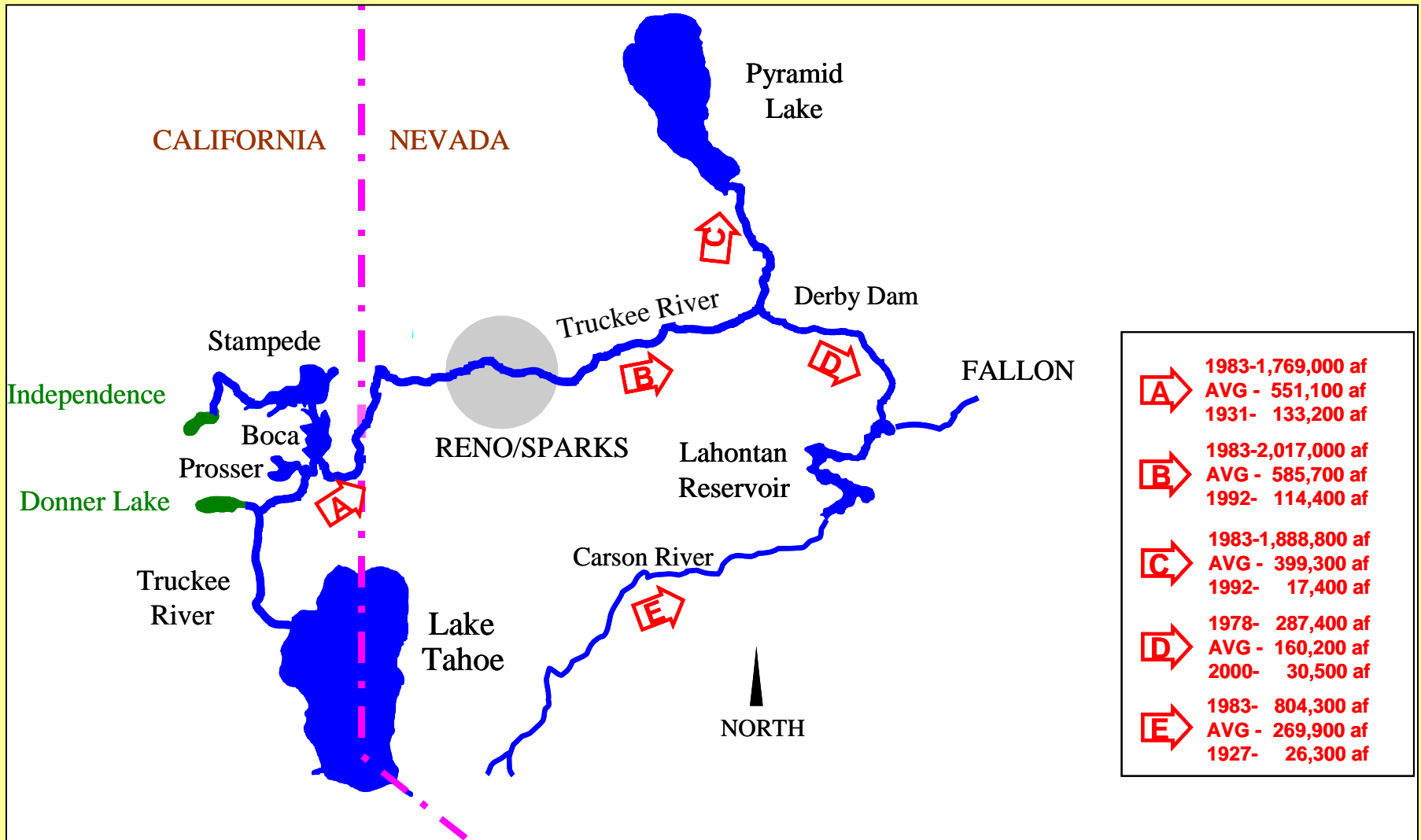
# TMWA Water Quality

- **Outstanding Source of Supply – 85-90% from Lake Tahoe/Truckee River System**
- **Two surface water treatment plants**
- **Groundwater Sources (33 wells) – 10-15% of total supply**
- **Treatment facilities for 5 wells (PCE removal)**
- **TMWA meets all federal and state drinking water standards**
- **TMWA has never had a violation of any drinking water standard**

## **Environmental Working Group (EWG) Report – December, 2009**

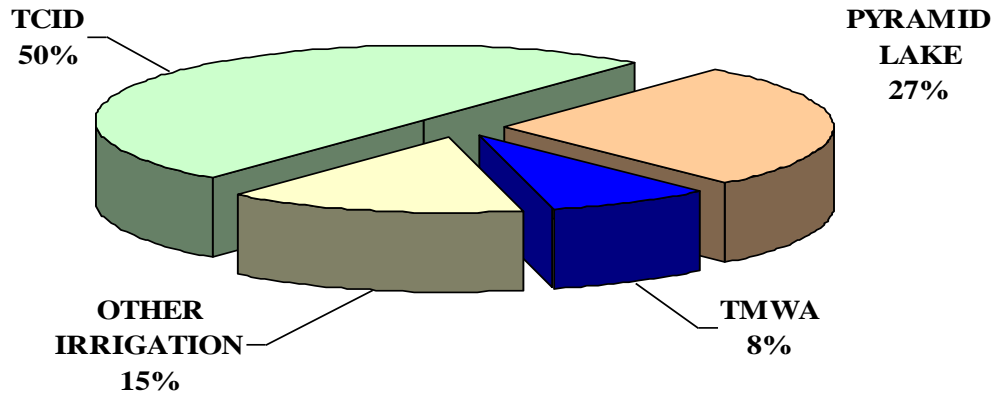
- **Inaccurate data – 35% of the data is inaccurate**
- **Example – reported untreated water test data as water delivered to customers**
- **TMWA sent EWG corrected data a year ago**
- **EWG said they would use the corrected data to modify the report**
- **The report was never modified**
- **TMWA sent certified letter to EWG in August, 2010 – no response**
- **Reporter recently accessed the old report - picked up by national/local media**

# Truckee River System



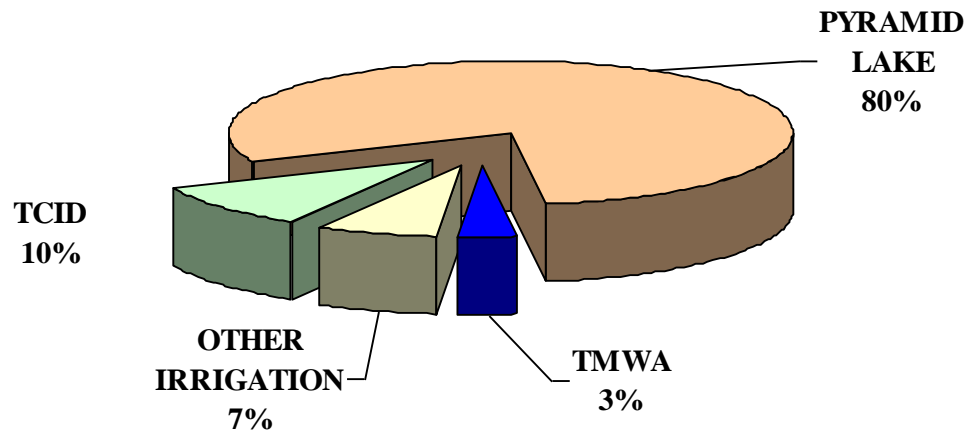
# Diversions of the Truckee River

## DROUGHT SITUATION DIVERSIONS



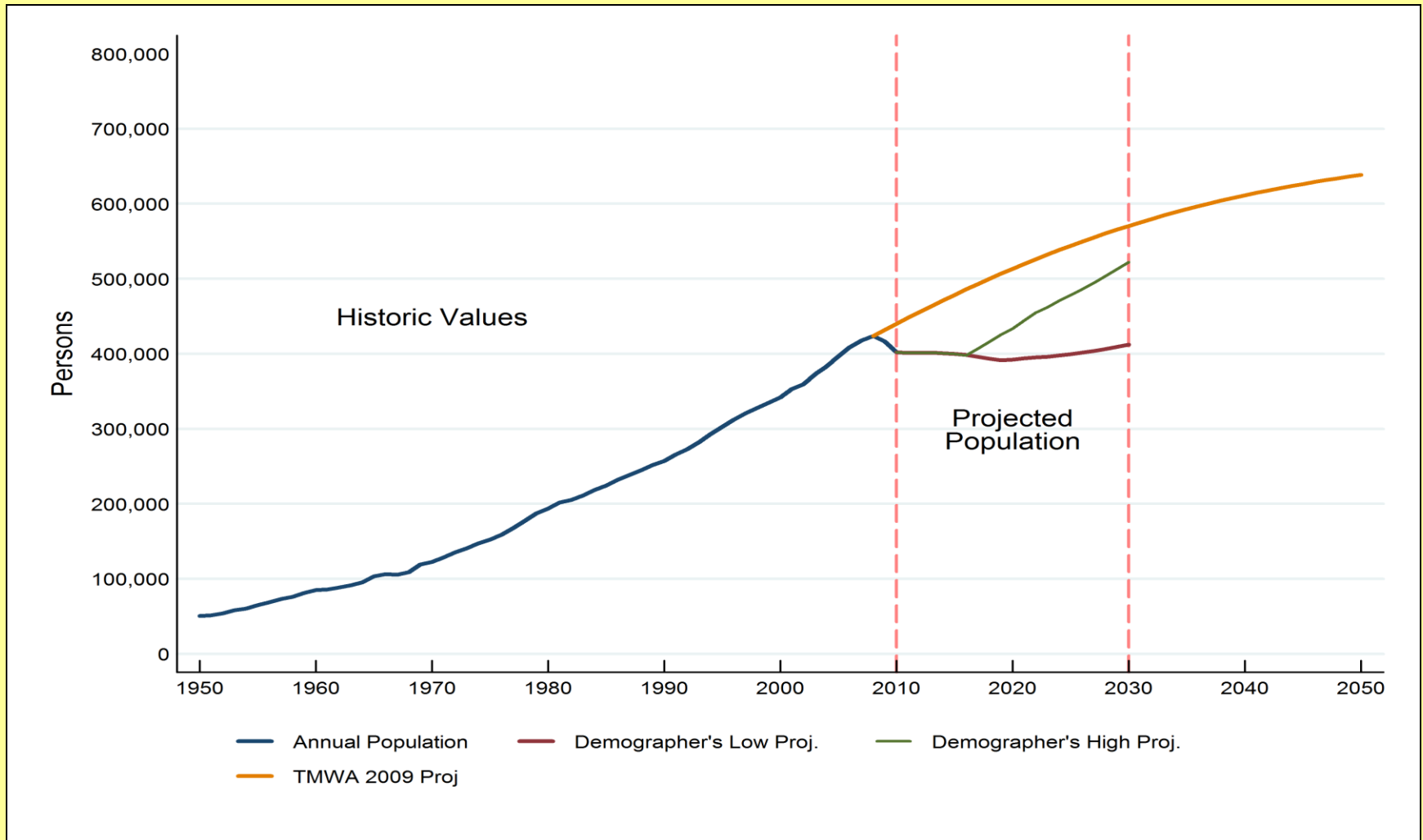
\* ~ 304 KAF Avg. 1987-1992, 1994, 2001-2004, 2007-2009

## NON-DROUGHT SITUATION DIVERSIONS

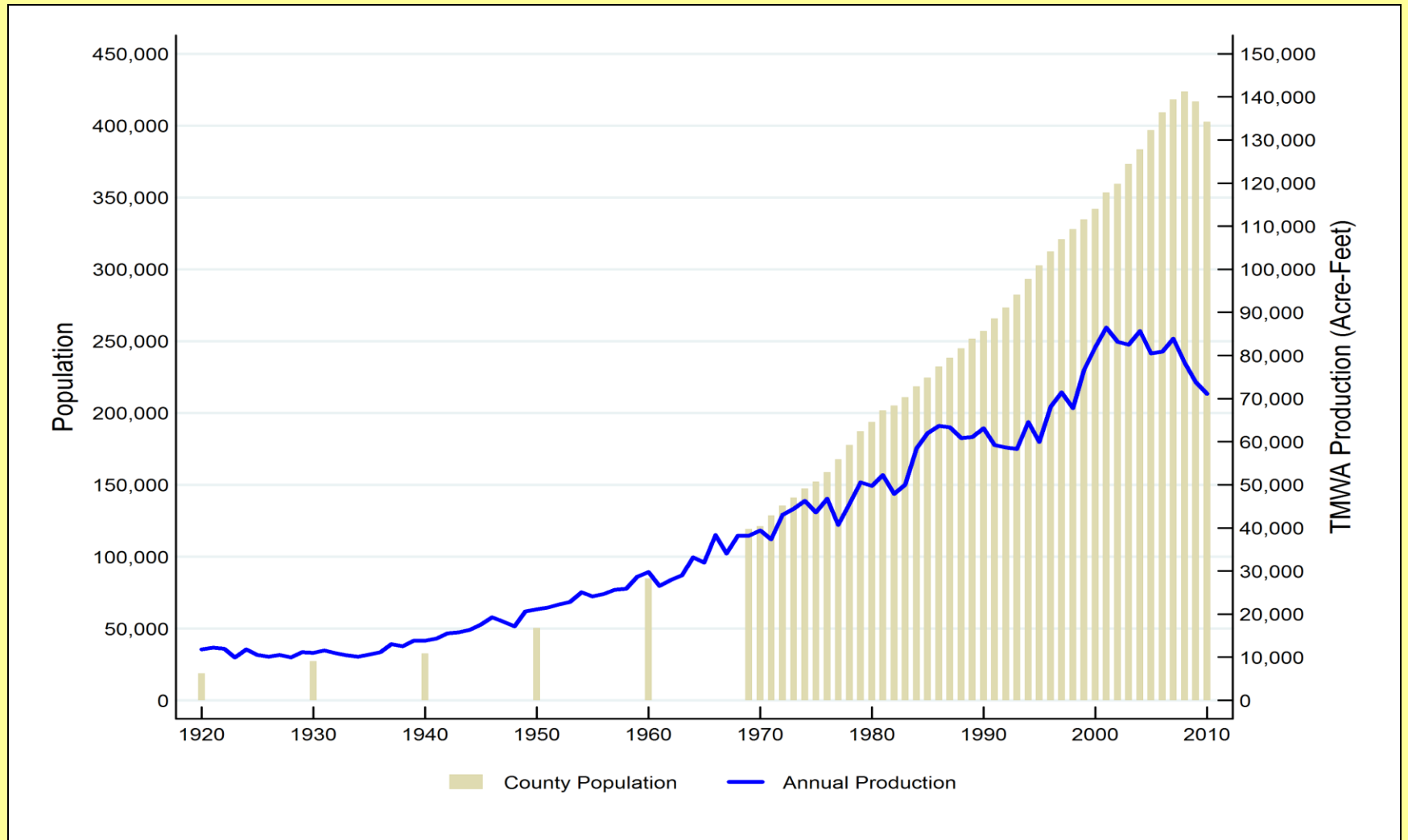


\* ~ 736 KAF Avg. 1985-1986, 1993, 1995-2000, 2005-2006

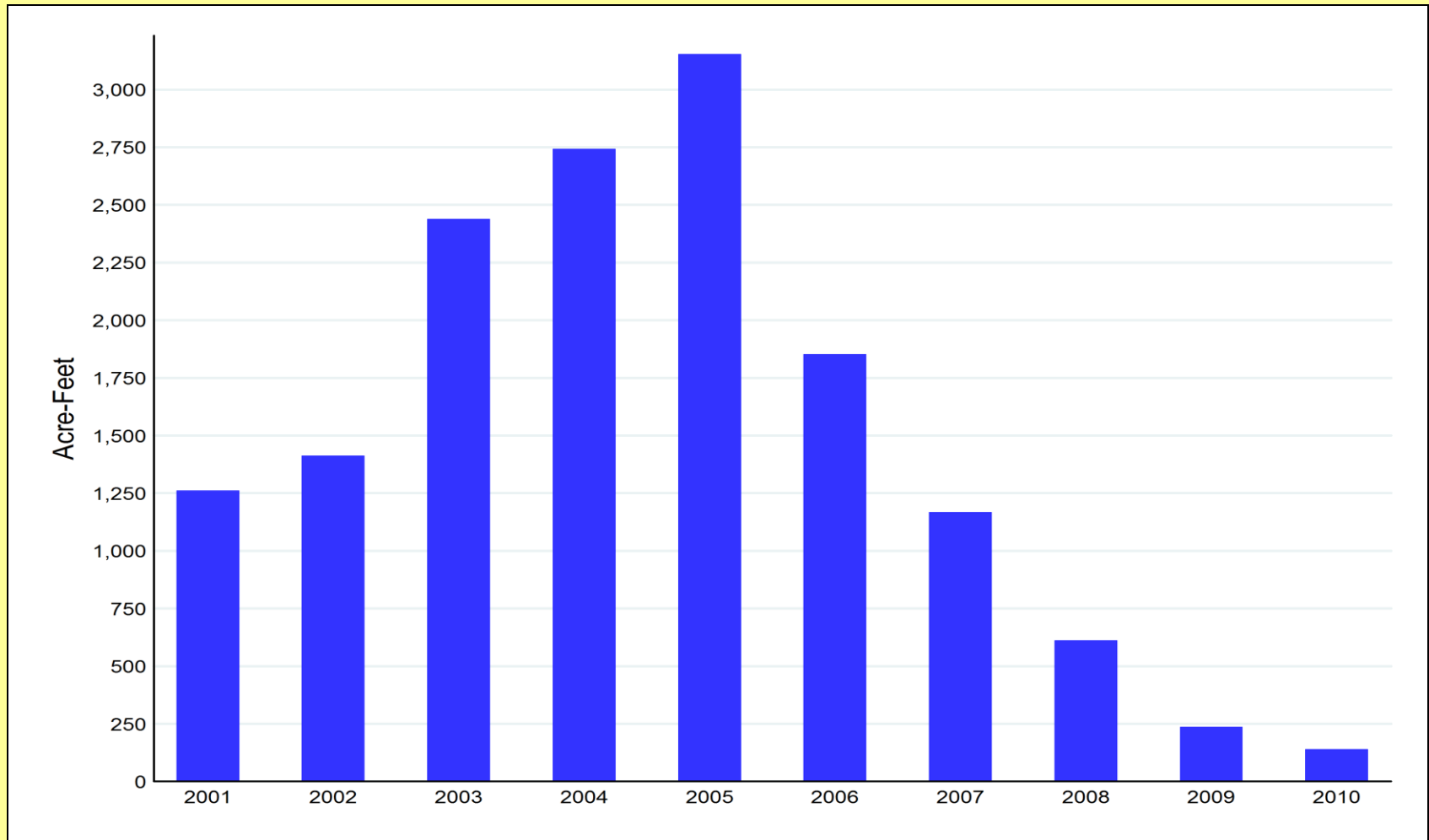
# Projected Population



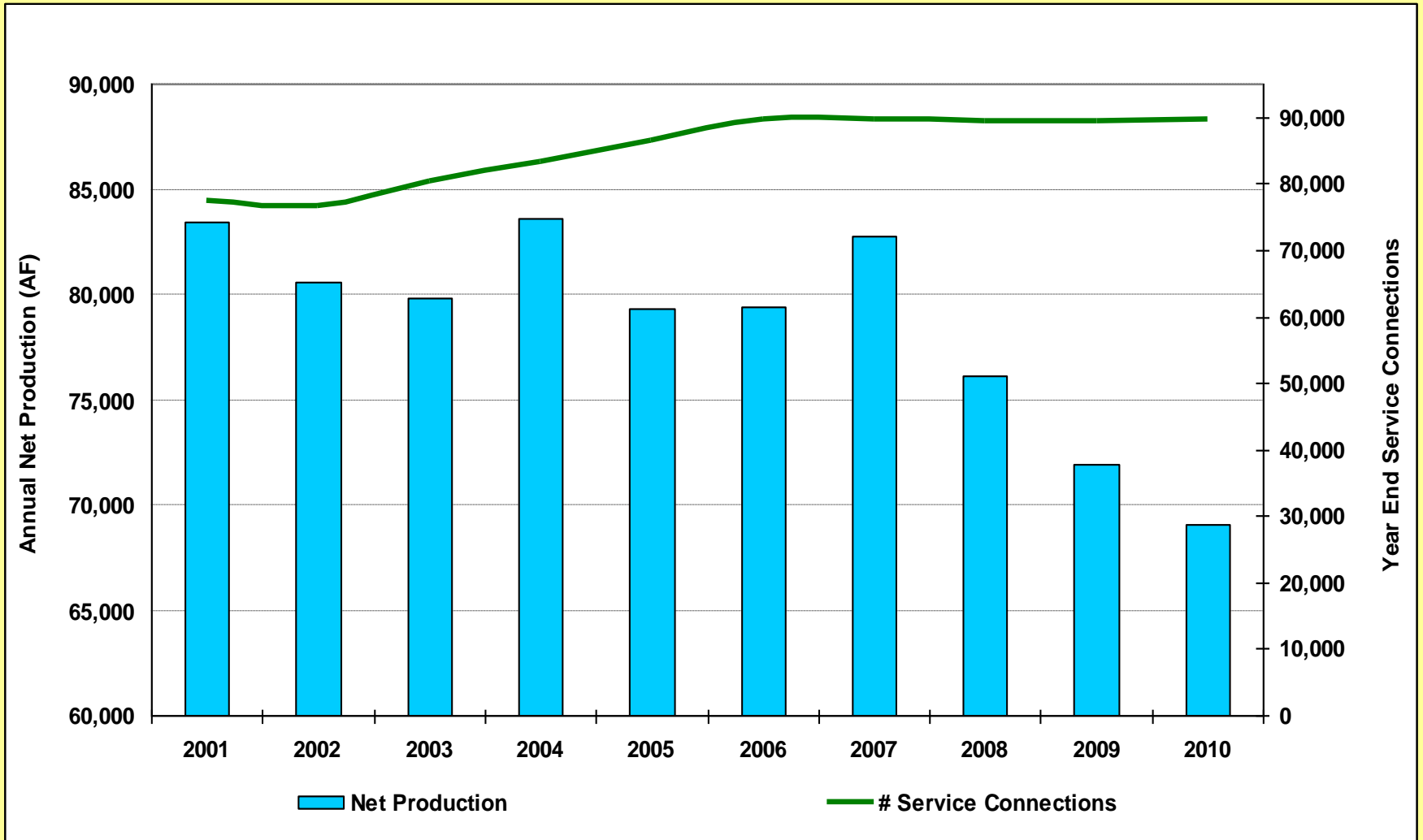
# Population Growth & Water Production



# Will-Serve Commitments

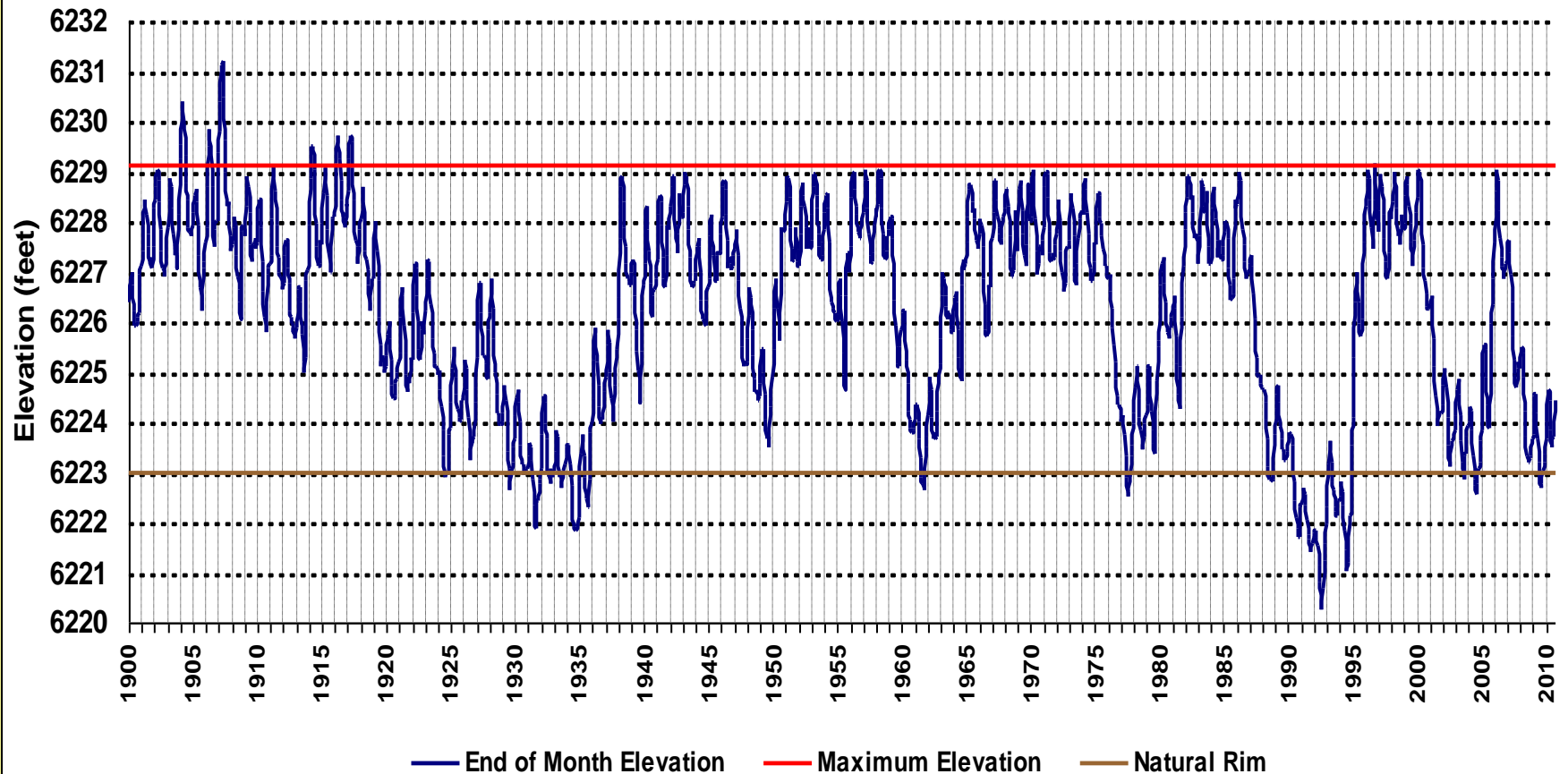


# Net Production vs. Service Connections

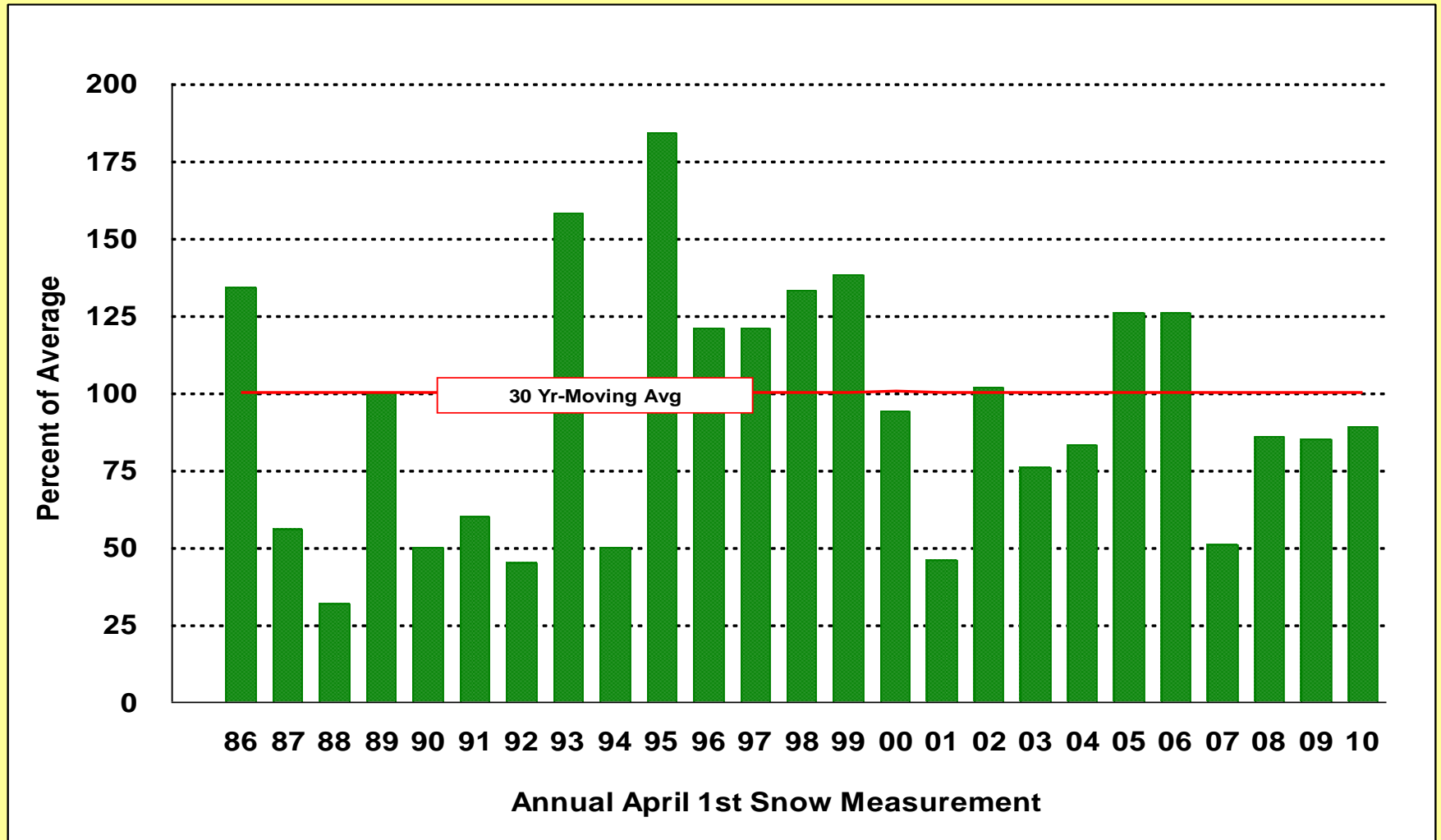


# Water Year

## Lake Tahoe Elevations 1900-Present



# Truckee River Basin Snowpack



# 20-Year Water Resource Plan

- TMWA recently released the **2010-2030 Water Resource Plan**
- The plan outlines our region's **projected demands**, along with our **current and future water resources**
- Our research shows that we have **sufficient water resources** to meet our region's projected **water demands through 2030 and well beyond**

# Truckee River Operating Agreement (TROA)

- Increases drought storage up to 55,000 AF
- Ratifies California and Nevada allocation of water
- Protects Endangered Species (e.g. enhanced in-stream flows and water quality benefits)
- Improves upstream reservoir storage levels for recreational uses
- Requires water meters in Reno/Sparks
- Rules for effluent use

# Potential Water Supply Projects

Project	Estimated Yield ----a----	Irrigation Rights Required ----b----
<i>Groundwater</i>		
Aqua Trac, LLP	80,000+	
High Rock Holdings & Juniper Hills Partners, LLC	10,000 - 14,000	
Intermountain Water Project	2,000 - 3,000	na
North Valleys Importation	8,000	
Red Rock Valley Ranch, LLC	1,300	
Sonterra	7,200	na
<i>Surface Water</i>		
Aquifer Storage and Recovery	8,000	8,000
Negotiated Settlement (TROA)	119,000	36,000
South Truckee Meadows Surface Treatment Plant*	6,700	8,000-12,000



## **Q & A**

**Mark Foree 834-8009 [mforee@tmwa.net](mailto:mforee@tmwa.net)**